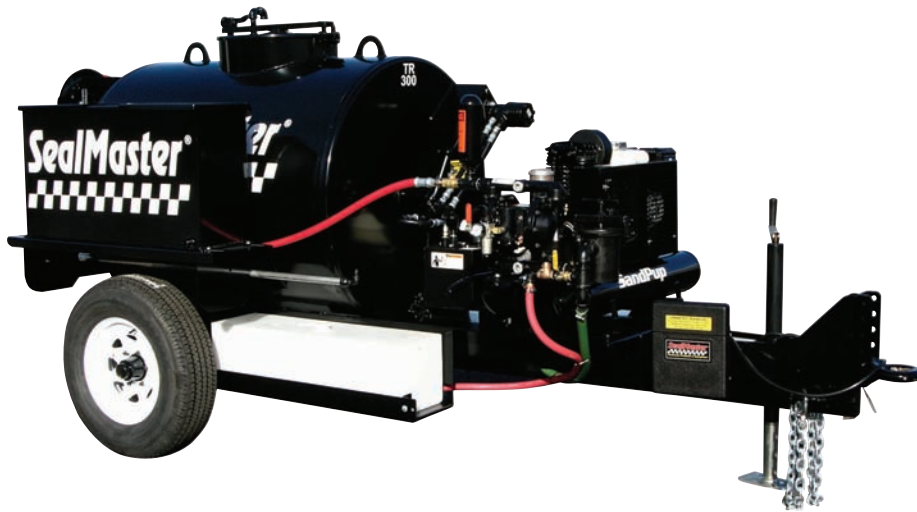


# SAND PUP TRAILER

## Owner's Manual



**SealMaster**<sup>®</sup>  
  
Pavement Products & Equipment

PO Box 2277 • Sandusky, Ohio 44870 • 419-626-4375

**SealMaster**<sup>®</sup>

# ThorWorks Industries, Inc.

Purchased by \_\_\_\_\_ Model NO. \_\_\_\_\_

Company Name \_\_\_\_\_ Serial NO. \_\_\_\_\_

Address \_\_\_\_\_ Acceptance Date \_\_\_\_\_

City \_\_\_\_\_ State \_\_\_\_\_ Zip \_\_\_\_\_

## CORRESPONDENCE

All Correspondance regarding this equipment, as well as general correspondence should be addressed to:

ThorWorks Industries, Inc.  
PO Box 2277  
Sandusky, OH 44870

In referring to the equipment, kindly state the Model Number, Serial Number and any part number involved



## **Table of Contents**

1. Warranty
- 2-3. Operating instructions
4. Air schematic
5. Material schematic
6. Parts schematic
- 7-8. Parts list
9. Material depth chart

## SealMaster Limited Warranty

SealMaster warrants that its products are of quality material and workmanship. SealMaster agrees to replace, within a period of one (1) year from date of delivery, or at its option, repair, without charge, any part of their manufacture which proved defective. The repair or replacement will be free of charge F.O.B Sandusky, Ohio, proving the damaged part or parts are returned, freight prepaid, to SealMaster and investigation show such repair or replacement is made necessary by inherent defect of material or workmanship.

It is hereby understood that engines, motors, pumps, or other components purchased by SealMaster for use on its equipment are not warranted by SealMaster and are sold only with the standard warranty of the manufacturer of that component.

SealMaster will make no allowances for repairs or alterations completed by outside sources unless authorization is in writing and approved by an authorized SealMaster representative.

Any claims for defective material or workmanship must be made prior to the expiration of thirty (30) days from the date failure occurs, and in all cases prior to the expiration of the warranty period of one (1) year. It is the intent of this paragraph to limit SealMaster's liability solely to the cost of replacement parts, F.O.B. factory, or at the option of SealMaster to repair of the defective part or parts. No allowances for damages, lost time, or any other claim will be recognized.

This warranty is null and void if other than genuine SealMaster parts are used.

SealMaster is constantly striving to improve their products. Changes in design and improvement will be made whenever the manufacturer believes the efficiency of the product will be improved, without incurring any obligation to incorporate such improvements in any machines which have been shipped or are in service.

In an effort to continue to improve product quality, SealMaster reserves the right to change specifications without notice.

Any modification or alteration of this machine without prior approval of the manufacturer may void this warranty.

## OPERATING INSTRUCTIONS

READ ALL OWNERS MANUALS THAT COME WITH YOUR MACHINE

DAILY CHECK THE ENGINE AND COMPRESSOR OILS

1. To start the compressor engine, flip the lever on valve A2 to the vertical position, this allows the engine to easily start. Turn the engine shut off switch to on, open the fuel shutoff valve, and slide the choke lever to on. When the engine is warm, flip the lever back to the horizontal position. The engine rpm's will now increase and the compressor will charge the air tanks, once they are filled the engine rpm's will drop back to idle.

2. The pressure regulator/water trap A5 is located on the diaphragm pump A7. The water trap collects the moisture that is in the compressed air and needs to be emptied on an as needed basis. There is a knob on the bottom that needs to be turned to release the water. The pressure gauge on the regulator is preset for 80 psi. When the material is coming out of the spray tip, you will feel the wand want to raise on it's own. Thickness of material determines how much pressure is needed to properly atomize the material. You may have to increase the pressure setting on the regulator A5 to get a proper spray pattern. To do this, turn the knob on top of the regulator clockwise. It is possible that you will need to run the pressure at the maximum of 125 psi, it all depends on how thick your material is.

3. Valve A6 turns the pump on and off by controlling the air entering the pump. When using the spray wand, open this valve completely. The pump automatically slows down or speeds up depending on tip size or condition. When you close the wand valve, the pump will make a few cycles then stop. When the wand valve is opened, the pump will start pumping again, if it does not, bleed all of the air from the system and start over. If the pump still does not cycle, refer to the troubleshooting guide in the pump manual.

4. To spray with the wand P14, open valves A6, M3, and M6, completely pull all of the hose from the reel P12 and then slowly open the valve on the wand. Try to always open the wand valve completely as this will make it last longer. The wand valve and spraytips are wear items and need to be replaced periodically. Spraytips typically need replaced every 1500 to 2000 gallons if using a sand mix. The center of the spray starts to get heavy as the tip wears, keeping the tip too long causes you to use more sealer than necessary.

5. When you notice the spray pattern starts to decrease, this means the basket strainer M2 needs to be cleaned. It will need cleaned daily and sometimes more than once a day. Close valve A6 on the pump A7. To remove the basket first close valve M3, open the wand

valve to release some pressure and remove the basket strainer lid. Pull out the basket and scrape it clean or dunk it in a bucket of water. Replace and install the lid, open valve M3.

6. To clean out the pumping system water is provided on the machine. It is not necessary to flush the system every day. If the machine is going to set for a week or more then water flush the system. To do this first close valve M3, open the lid on top of the tank and insert the spray wand or have an empty bucket handy.

Open the spray wand valve, on the side of the basket strainer M2 is a valve M1. This connects via a hose to the 50 gallon water tank P9. Open valves M1 and A6. The diaphragm pump will draw the water from the tank, push it through the spray hose and wand. When you see the sealer start to change over to water, close valves A6 and M1. On the side of water tank P9 is a check valve P10. This keeps sealer from flowing into the water tank if you leave valve M1 open. Do not rely on this valve to always operate properly, make sure you always close valve M1.

7. To fill a bucket, open valve M5.

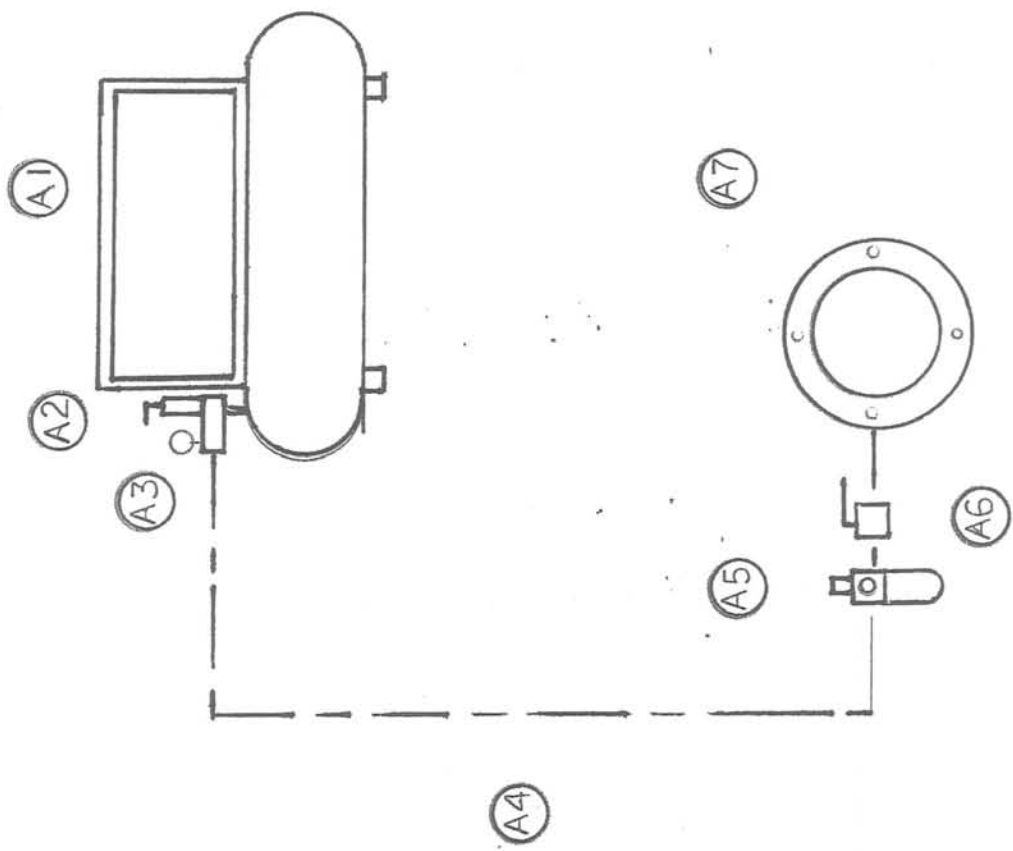
80/50 spray tip

at 60 psi will pump 6.1 gpm

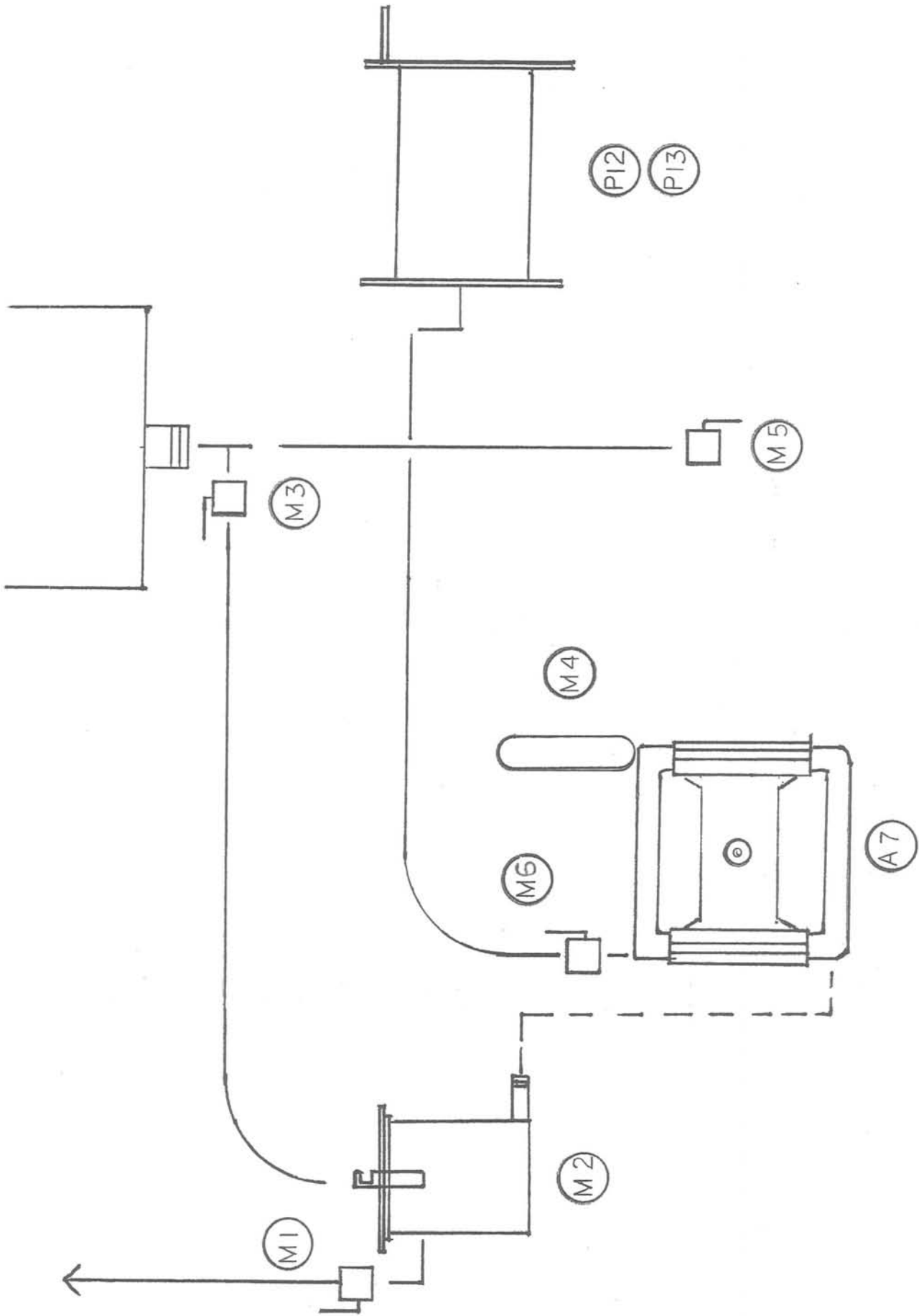
at 80 psi will pump 7.1 gpm

at 100 psi will pump 7.9 gpm

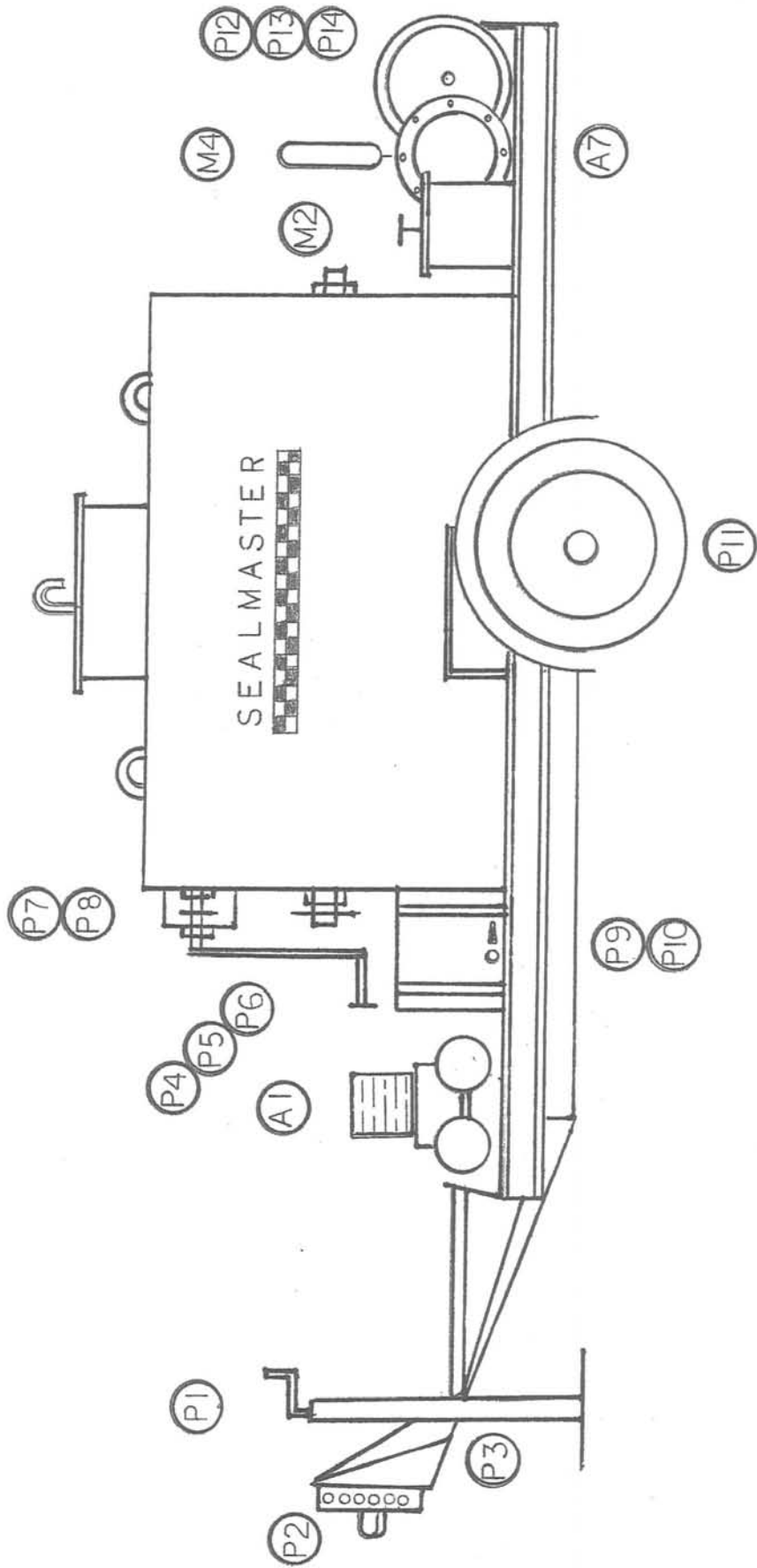
Note: skid tank configuration differs from the trailer, but operation is exactly the same



AIR SCHEMATIC



MATERIAL SCHEMATIC



PARTS SCHEMATIC

| ITEM # | PART #     | QTY | DESCRIPTION               |
|--------|------------|-----|---------------------------|
| A1     | P458A045   | 1   | 5.5 HP AIR COMPRESSOR     |
| A2     | P458B001   | 1   | UNLOADER VALVE            |
| A3     | P735A027   | 1   | PRESSURE GAUGE            |
| A4     | P709C000   |     | POLY AIR TUBING           |
| A5     | P735A046   | 1   | REGULATOR/FILTER ASSEMBLY |
| A6     | P397A005   | 1   | 3/8" BALL VALVE           |
| A7     | P640A047   | 1   | AIR DIAPHRAGM PUMP        |
| M1     | P397A001   | 1   | 3/4" BALL VALVE           |
| M2     | P50147B004 | 1   | BASKET STRAINER           |
| M3     | P397A013   | 1   | 1" BALL VALVE             |
| M4     | P30003E    | 1   | SURGE TANK                |
| M5     | P397A002   | 1   | 2" BALL VALVE             |
| M6     | P397A013   | 1   | 1" BALL VALVE             |
| P1     | P551A001   | 1   | JACK ASSEMBLY             |
| P2     | P553A006   | *   | 1 7/8"/ 2" BALL COUPLER   |
| P2     | P553A008   | *   | 2 5/16" BALL COUPLER      |
| P2     | P646A003   | *   | PINTLE EYE COUPLER        |
| P3     | P518A000   | 1   | SAFETY BREAKAWAY KIT      |
| P4     | P426A011   | 1   | SPROCKET                  |
| P5     | P434A003   | 2   | 4 HOLE FLANGE BEARING     |
| P6     | P50137B002 | 2   | SHAFT SEAL                |
| P7     | P426A003   | 1   | SPROCKET                  |
| P8     | P432A001   | 2   | 2 HOLE BEARING            |

|               |               |            |                    |
|---------------|---------------|------------|--------------------|
| P9            | P596A002      | 1          | WATER TANK         |
| <b>ITEM #</b> | <b>PART #</b> | <b>QTY</b> | <b>DESCRIPTION</b> |
| P10           | P398A003      | 1          | CHECK VALVE        |
| P11           | P514A016      | 2          | TIRE ASSEMBLY      |
| P12           | P901A001      | 1          | HOSE REEL          |
| P13           | P754B026      | 1          | 75' SPRAY HOSE     |
| P14           | P50273B       | 1          | SPRAY WAND         |

\* DENOTES YOUR CHOICE

**OPTIONAL HYDRAULIC DRIVE**

|     |          |   |                                    |
|-----|----------|---|------------------------------------|
| N/S | P458A027 | 1 | 5.5 HP HONDA GEAR REDUCTION ENGINE |
| N/S | P601A025 | 1 | HYDRAULIC TANK/PUMP                |
| N/S | P630A035 | 2 | COUPLING                           |
| N/S | P631A005 | 1 | COUPLING INSERT                    |
| N/S | P472A010 | 1 | FWD-REV CONTROL VALVE              |
| N/S | P474A003 | 1 | HYDRAULIC DRIVE MOTOR              |

### SealMaster Tank Chart

Material Depth in Inches

Gallons per Inch

|    |  |  |  |  |     |
|----|--|--|--|--|-----|
| 1  |  |  |  |  | 3   |
| 2  |  |  |  |  | 7   |
| 3  |  |  |  |  | 11  |
| 4  |  |  |  |  | 17  |
| 5  |  |  |  |  | 23  |
| 6  |  |  |  |  | 29  |
| 7  |  |  |  |  | 36  |
| 8  |  |  |  |  | 44  |
| 9  |  |  |  |  | 51  |
| 10 |  |  |  |  | 59  |
| 11 |  |  |  |  | 67  |
| 12 |  |  |  |  | 76  |
| 13 |  |  |  |  | 85  |
| 14 |  |  |  |  | 94  |
| 15 |  |  |  |  | 103 |
| 16 |  |  |  |  | 112 |
| 17 |  |  |  |  | 121 |
| 18 |  |  |  |  | 130 |
| 19 |  |  |  |  | 140 |
| 20 |  |  |  |  | 149 |
| 21 |  |  |  |  | 159 |
| 22 |  |  |  |  | 168 |
| 23 |  |  |  |  | 177 |
| 24 |  |  |  |  | 187 |
| 25 |  |  |  |  | 196 |
| 26 |  |  |  |  | 205 |
| 27 |  |  |  |  | 214 |
| 28 |  |  |  |  | 223 |
| 29 |  |  |  |  | 231 |
| 30 |  |  |  |  | 240 |
| 31 |  |  |  |  | 248 |
| 32 |  |  |  |  | 256 |
| 33 |  |  |  |  | 263 |
| 34 |  |  |  |  | 270 |
| 35 |  |  |  |  | 277 |
| 36 |  |  |  |  | 283 |
| 37 |  |  |  |  | 289 |
| 38 |  |  |  |  | 294 |
| 39 |  |  |  |  | 298 |
| 40 |  |  |  |  | 302 |